

IWW - JACKSONVILLE TO MIAMI CUTS SJ-1 THRU SJ-64 ST JOHNS COUNTY, FL HYDROGRAPHIC EXAM SURVEY FY21 12-FOOT PROJECT

SURVEY NOTES

- REFER TO SURVEY NO. 21-205.
- SOUNDINGS ARE IN FEET AND TENTHS AND REFER TO NOAA'S REPORTED MEAN LOWER LOW WATER (MLLW) OF THE 1983-2001 TIDAL EPOCH.
- TIDAL REDUCTIONS WERE OBTAINED UTILIZING A REAL-TIME KINEMATIC (RTK) GPS AND REFERENCED TO MLLW UTILIZING A HYPACK KINEMATIC TIDE DATUM (KTD) MODEL. KTD FILE NAME IS: "CAMDENGA-NASSAU-DUVAL-STJOHNS-FLAGLER_20191202.KTD".
- ALL ELEVATIONS ARE BELOW THE CHART DATUM UNLESS PRECEDED BY A (+) SIGN.
- PLANE COORDINATES ARE BASED ON THE TRANSVERSE MERCATOR PROJECTION FOR THE EAST ZONE OF FLORIDA AND REFERENCED TO NORTH AMERICAN DATUM OF 1983 (NAD83).
- ALL STATIONING REFERS TO THE CENTERLINE OF THE CHANNEL.
- THIS SURVEY WAS PERFORMED USING FLORIDA PERMANENT REFERENCE NETWORK (VRS) FOR REAL-TIME KINEMATIC (RTK) GPS POSITIONING.
- DEPTHS DEPICTED BY THIS SURVEY ARE REFERENCED TO MLLW, TIDAL EPOCH 1983-2001 AS REPORTED BY THE NATIONAL OCEANIC AND ATMOSPHERIC ADMINISTRATION (NOAA). NOAA'S VDATUM MODEL WAS USED AND CALIBRATED TO THE PUBLISHED MLLW HEIGHTS OF THE BENCHMARKS SITE SPECIFIED BELOW:
 NOAA TIDAL STATION "0398 J 2003" FOR NORTH END (NGS PID: DL5790)
 NOAA TIDAL STATION "872-0686" FOR MIDDLE (NGS PID: DL5712)
 NOAA TIDAL STATION "872-0686 TIDAL 1" FOR SOUTH END (NGS PID: AQ1557)
- VERTICAL MEASUREMENTS WERE MADE USING A ROSS MODEL 835C SMART SOUNDER DUAL-FREQUENCY (28/200 KHZ) SINGLE-BEAM TRANSDUCER AND AN EDGETECH 6205 MULTIPHASE ECHOSOUNDER. ALL SOUNDINGS SHOWN ARE IN HIGH FREQUENCY.
- VESEL: SB-44 23 JUN 2021 SJ-7 TO SJ-14
 SB-44 24 JUN 2021 SJ-1 TO SJ-7
- AIDS TO NAVIGATION WERE LOCATED DURING THIS SURVEY.
- THE INFORMATION DEPICTED ON THIS MAP REPRESENTS THE RESULTS OF SURVEYS MADE ON THE DATES INDICATED ABOVE AND CAN ONLY BE CONSIDERED AS INDICATING THE GENERAL CONDITIONS AT THAT TIME. THIS CHART IS SOLELY FOR THE DISTRIBUTION OF AVAILABLE DEPTHS AT THE TIME OF THE SURVEY.
- SURVEY ACCURACY PERFORMANCE STANDARDS, QUALITY CONTROL, AND QUALITY ASSURANCE REQUIREMENTS WERE FOLLOWED DURING THIS SURVEY IN ACCORDANCE WITH USACE EM 1110-2-1003, HYDROGRAPHIC SURVEYING, 30 NOV 2013.

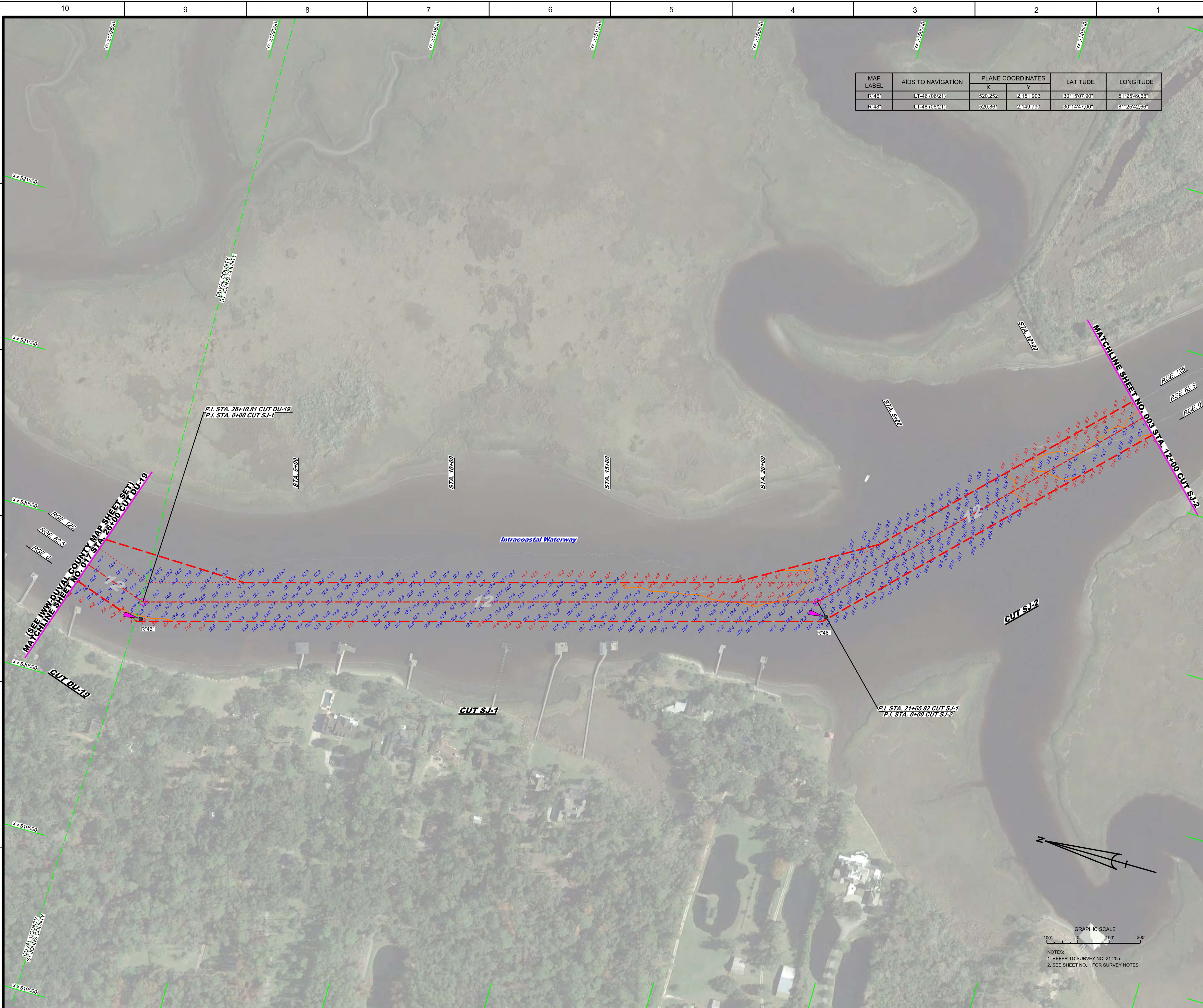
LEGEND	
	MONUMENT
	LIGHTED BEACON
	GREEN DAYBEACON
	RED DAYBEACON
	RED LIGHTED BUOY
	GREEN LIGHTED BUOY
	CAN BUOY
	NUN BUOY
	TIDE STAFF
	PROJECT DEPTH

US Army Corps of Engineers
 Jacksonville District
 SAFETY ON THIS JOB
 DEPENDS ON YOU

Checked By: GHR	Designed By: WRM	Drawn By: WRM	File No: W8122P-000-00000	Project No: 21-205-H401_L_SLDGN
Scale: AS SHOWN	Drawing no. 1	SHEET 01 OF 73		

DEPARTMENT OF THE ARMY
 JACKSONVILLE DISTRICT, CORPS OF ENGINEERS
 JACKSONVILLE, FLORIDA

INTRACOASTAL WATERWAY
 JACKSONVILLE TO MIAMI, FLORIDA
 ST. JOHNS COUNTY
 HYDROGRAPHIC EXAM SURVEY FY21
 12-FOOT PROJECT
 INDEX, LOCATION AND VICINITY
 MAP



MAP LABEL	AIDS TO NAVIGATION	PLANE COORDINATES		LATITUDE	LONGITUDE
		X	Y		
R*46*	LT-46 (08/21)	520,262	2,151,903	30°15'07.90"	81°25'49.68"
R*48*	LT-48 (08/21)	520,861	2,149,790	30°14'47.00"	81°25'42.66"

US Army Corps of Engineers
Jacksonville District
SAFETY ON THIS JOB
DEPENDS ON YOU

DEPARTMENT OF THE ARMY
JACKSONVILLE DISTRICT, CORPS OF ENGINEERS
JACKSONVILLE, FLORIDA

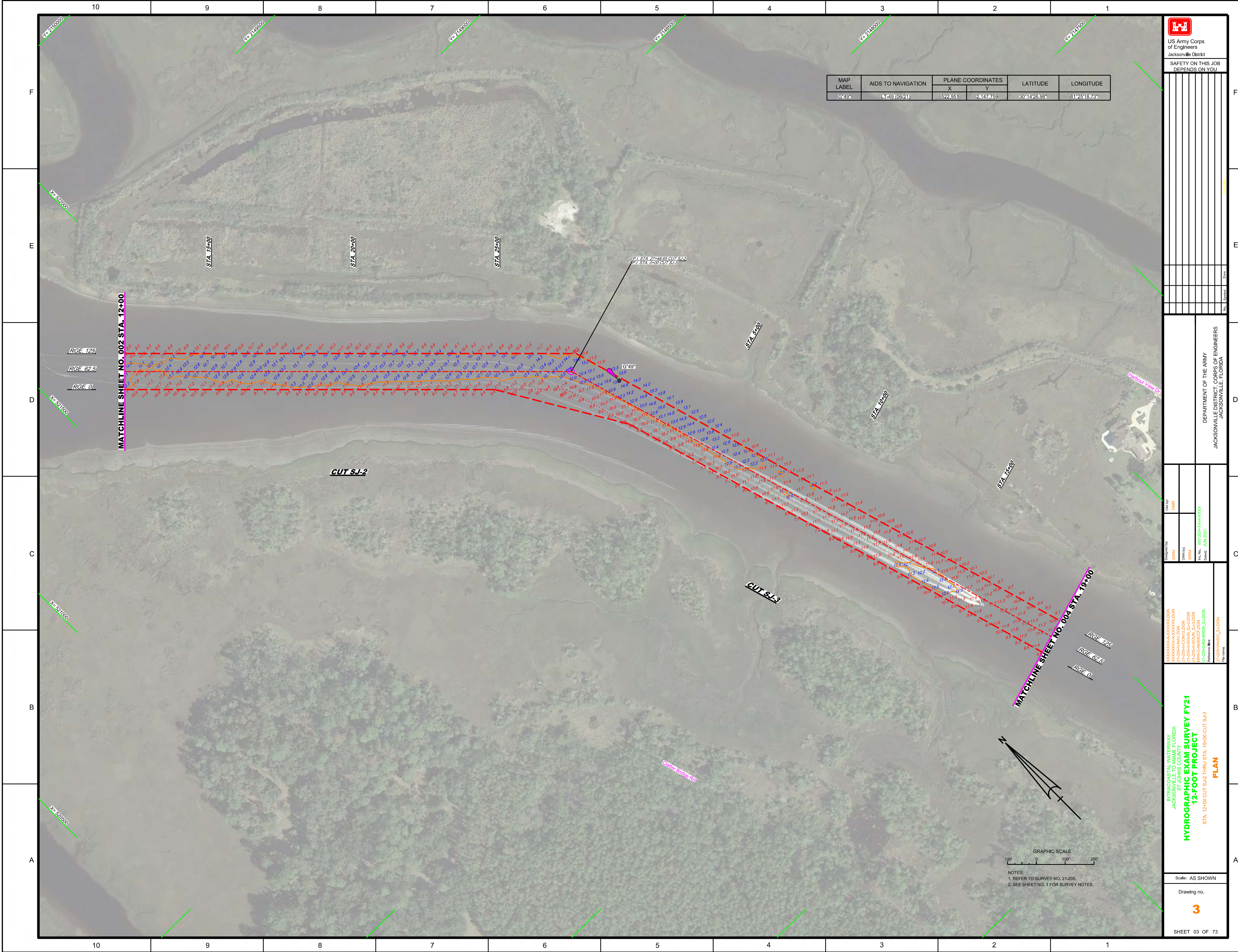
Checked by: GHR
Designed by: WRM
Drawn by: WRM
File No.: W122554-000-0004
Date: JUN 2021

INTRACOASTAL WATERWAY
JACKSONVILLE TO MIAMI, FLORIDA
ST. JOHNS COUNTY
HYDROGRAPHIC EXAM SURVEY FY21
12-FOOT PROJECT
STA. 26+00 CUT DU-19 THRU STA. 12+00 CUT S+2
PLAN

Scale: AS SHOWN
Drawing no. **2**
SHEET 02 OF 73

GRAPHIC SCALE
1" = 100'
Scale: AS SHOWN

NOTES:
1. REFER TO SURVEY NO. 21-205.
2. SEE SHEET NO. 1 FOR SURVEY NOTES.



MAP LABEL	AIDS TO NAVIGATION	PLANE COORDINATES		LATITUDE	LONGITUDE
		X	Y		
G 49°	LT-49 (08/21)	522,951	2,147,759	30°14'26.98"	81°25'18.73"


 US Army Corps of Engineers
 Jacksonville District
 SAFETY ON THIS JOB DEPENDS ON YOU

No.	Symbol	Name

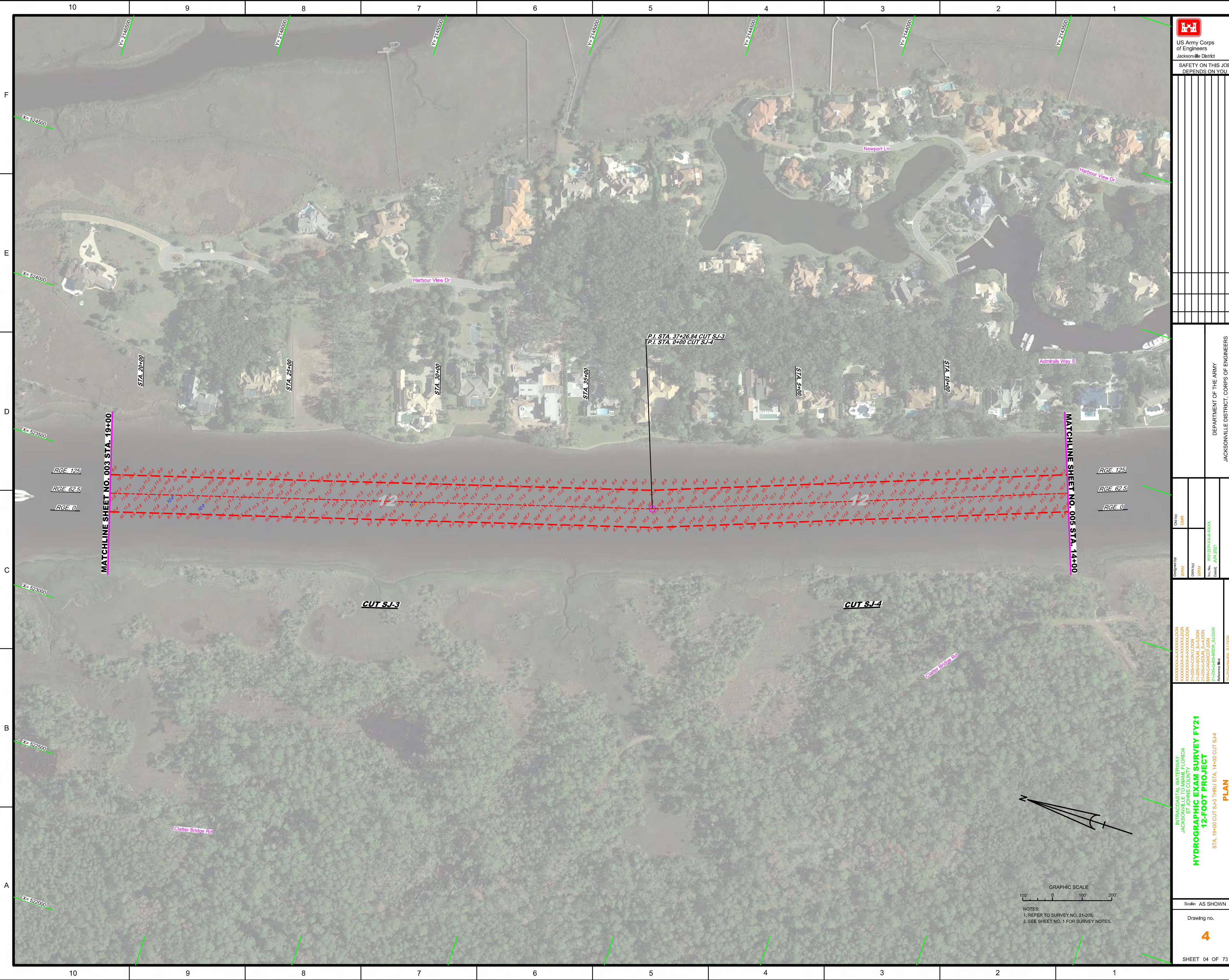
DEPARTMENT OF THE ARMY
 JACKSONVILLE DISTRICT, CORPS OF ENGINEERS
 JACKSONVILLE, FLORIDA

Checked by: GHR
 Designed by: WRM
 Drawn by: WRM
 File No.: W81255-A9-003A
 Date: JUN 2021
 Reference files:
 21-205-A9-003_SUDGN

INTRACOASTAL WATERWAY
 JACKSONVILLE TO MIAMI, FLORIDA
 ST. JOHNS COUNTY
HYDROGRAPHIC EXAM SURVEY FY21
12-FOOT PROJECT
 STA. 12+00 CUT S-1-2 THRU STA. 19+00 CUT S-1-3
PLAN

Scale: AS SHOWN
 Drawing no.
3
 SHEET 03 OF 73

GRAPHIC SCALE
 100' 0 100' 200'
 NOTES:
 1. REFER TO SURVEY NO. 21-205.
 2. SEE SHEET NO. 1 FOR SURVEY NOTES.



US Army Corps of Engineers
Jacksonville District

SAFETY ON THIS JOB DEPENDS ON YOU

No.	Symbol	Zone

DEPARTMENT OF THE ARMY
JACKSONVILLE DISTRICT, CORPS OF ENGINEERS
JACKSONVILLE, FLORIDA

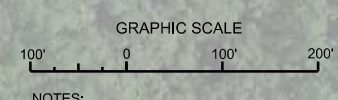
<p>Designated By: WRM</p> <p>Drawn By: WRM</p> <p>Checked By: WRM</p> <p>Date: JUN 2021</p>	<p>Drawn By: WRM</p> <p>Checked By: WRM</p> <p>Date: JUN 2021</p>
-------------------------------------------------------------------------------------------------------------	-------------------------------------------------------------------------------

INTRA-COASTAL WATERWAY
JACKSONVILLE TO MIAMI, FLORIDA
ST. JOHNS COUNTY
**HYDROGRAPHIC EXAM SURVEY FY21
12-FOOT PROJECT**
PLAN
STA. 19+00 CUT SJ-3 THRU STA. 14+00 CUT SJ-4

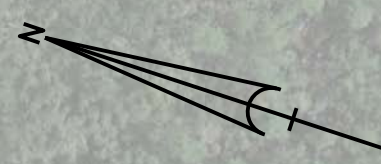
Scale: AS SHOWN

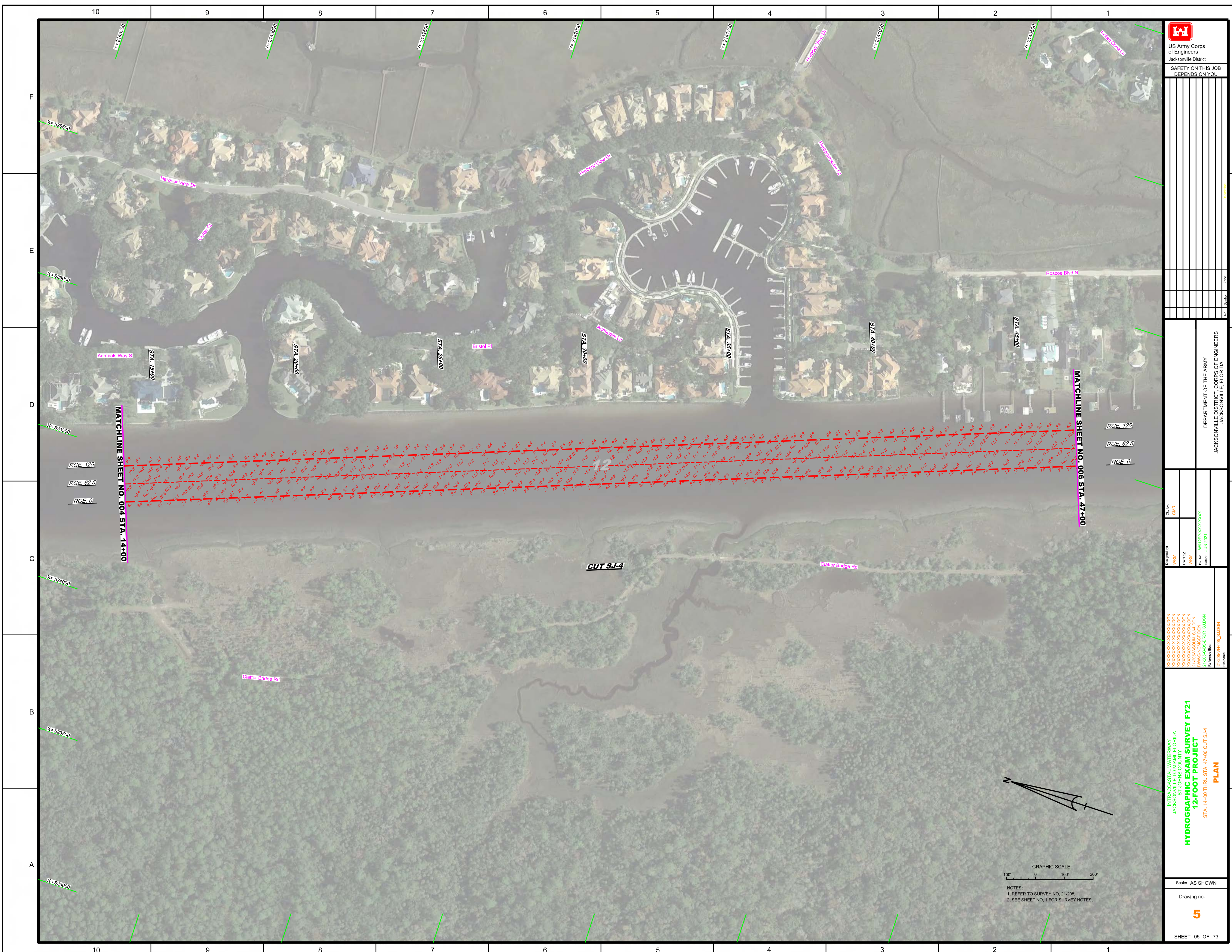
Drawing no.
4

SHEET 04 OF 73



NOTES:
1. REFER TO SURVEY NO. 21-205.
2. SEE SHEET NO. 1 FOR SURVEY NOTES.





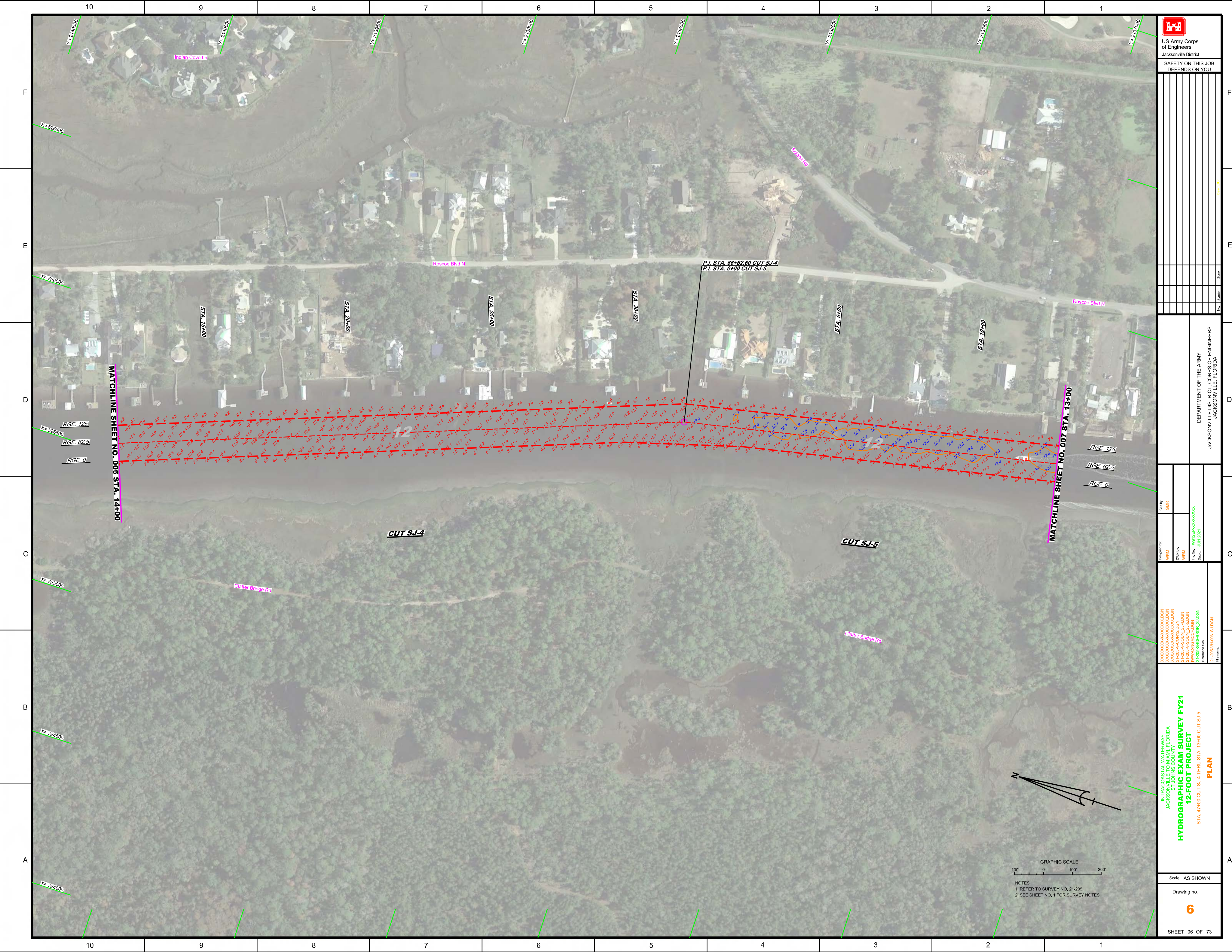
US Army Corps of Engineers Jacksonville District	
SAFETY ON THIS JOB DEPENDS ON YOU	

DEPARTMENT OF THE ARMY
JACKSONVILLE DISTRICT, CORPS OF ENGINEERS
JACKSONVILLE, FLORIDA

Checked by:	GHR
Designed by:	WRM
DRAWN BY:	WRM
FILE NO.:	W91225-P-000-P-004
DATE:	JUN 2021

INTRACOASTAL WATERWAY
JACKSONVILLE TO MIAMI FLORIDA
ST. JOHNS COUNTY
HYDROGRAPHIC EXAM SURVEY FY21
12-FOOT PROJECT
STA. 14+00 THRU STA. 47+00 CUT S-14
PLAN

Scale: AS SHOWN
Drawing no.
5
SHEET 05 OF 73




US Army Corps
of Engineers
Jacksonville District

SAFETY ON THIS JOB
DEPENDS ON YOU

DEPARTMENT OF THE ARMY
JACKSONVILLE DISTRICT, CORPS OF ENGINEERS
JACKSONVILLE, FLORIDA

Checked By: GMR
Designed By: WRM
Drawn By: WRM
File No: 21-205-HR006-SUDGN
Date: JUN 2021

XXXXXXXXXXXXXXXXXXXXDGN
XXXXXXXXXXXXXXXXXXXXDGN
XXXXXXXXXXXXXXXXXXXXDGN
21-205-HR006-SUDGN
21-205-HR006-SUDGN
21-205-HR006-SUDGN
21-205-HR006-SUDGN
Reference File:
21-205-HR006-SUDGN
File Name:


INTRACOSTAL WATERWAY
JACKSONVILLE TO MIAMI, FLORIDA
ST. JOHNS COUNTY
**HYDROGRAPHIC EXAM SURVEY FY21
12-FOOT PROJECT**
PLAN
STA. 47+00 CUT SJ-4 THRU STA. 13+00 CUT SJ-5

Scale: AS SHOWN
Drawing no.
6
SHEET 06 OF 73

GRAPHIC SCALE
100' 0 100' 200'

NOTES:
1. REFER TO SURVEY NO. 21-205.
2. SEE SHEET NO. 1 FOR SURVEY NOTES.





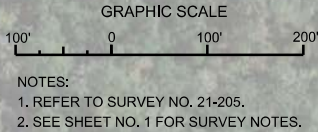
 US Army Corps of Engineers
 Jacksonville District
 SAFETY ON THIS JOB
 DEPENDS ON YOU

DEPARTMENT OF THE ARMY
 JACKSONVILLE DISTRICT, CORPS OF ENGINEERS
 JACKSONVILLE, FLORIDA

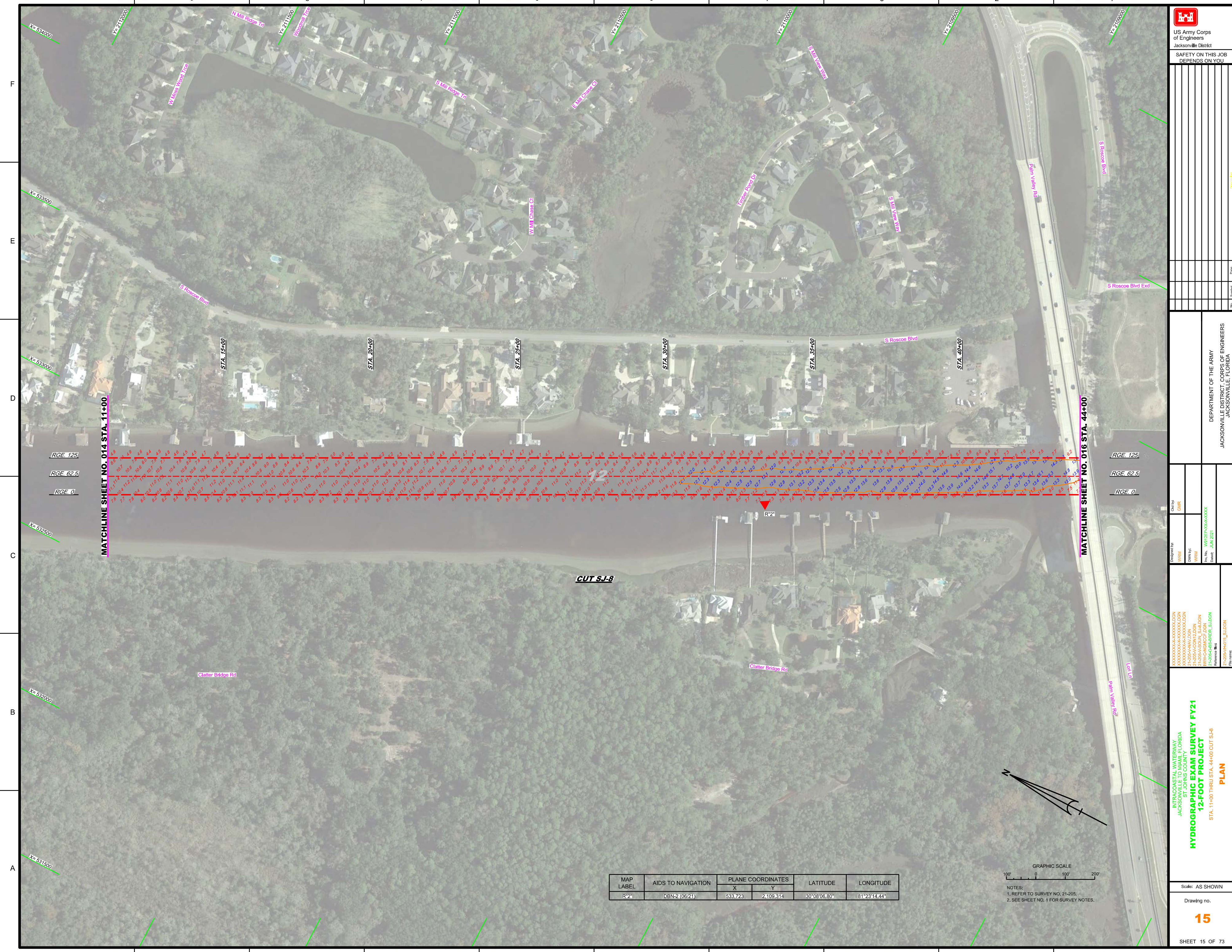
Drawn by: **WRM**
 Check by: **GHR**
 Designated by: **WRM**
 Design: **JUN 2021**
 File name: **21-205-6-013_SUDGN**

INTRACOASTAL WATERWAY
JACKSONVILLE TO MIAMI, FLORIDA
ST. JOHNS COUNTY
12-FOOT PROJECT
PLAN
 STA. 38+00 THRU STA. 69+00 CUT S-1.6

Scale: AS SHOWN
 Drawing no. **12**
 SHEET 12 OF 73



NOTES:
 1. REFER TO SURVEY NO. 21-205.
 2. SEE SHEET NO. 1 FOR SURVEY NOTES.



US Army Corps of Engineers
Jacksonville District

SAFETY ON THIS JOB
DEPENDS ON YOU

No.	Date	Revised By	Revised For

DEPARTMENT OF THE ARMY
JACKSONVILLE DISTRICT, CORPS OF ENGINEERS
JACKSONVILLE, FLORIDA

Drawn by: GHR
 Designated by: GHR
 Date: JUN 2021
 File Name: 21-205-G-BB-BR01A_SUDGN
 Reference files: 21-205-G-BB-BR01A_SUDGN

INTRACOASTAL WATERWAY
JACKSONVILLE TO MIAMI, FLORIDA
ST. JOHNS COUNTY

HYDROGRAPHIC EXAM SURVEY FY21 12-FOOT PROJECT

STA. 11+00 THRU STA. 44+00 CUT S-18
PLAN

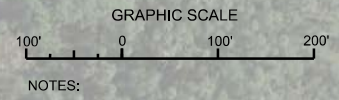
Scale: AS SHOWN

Drawing no.

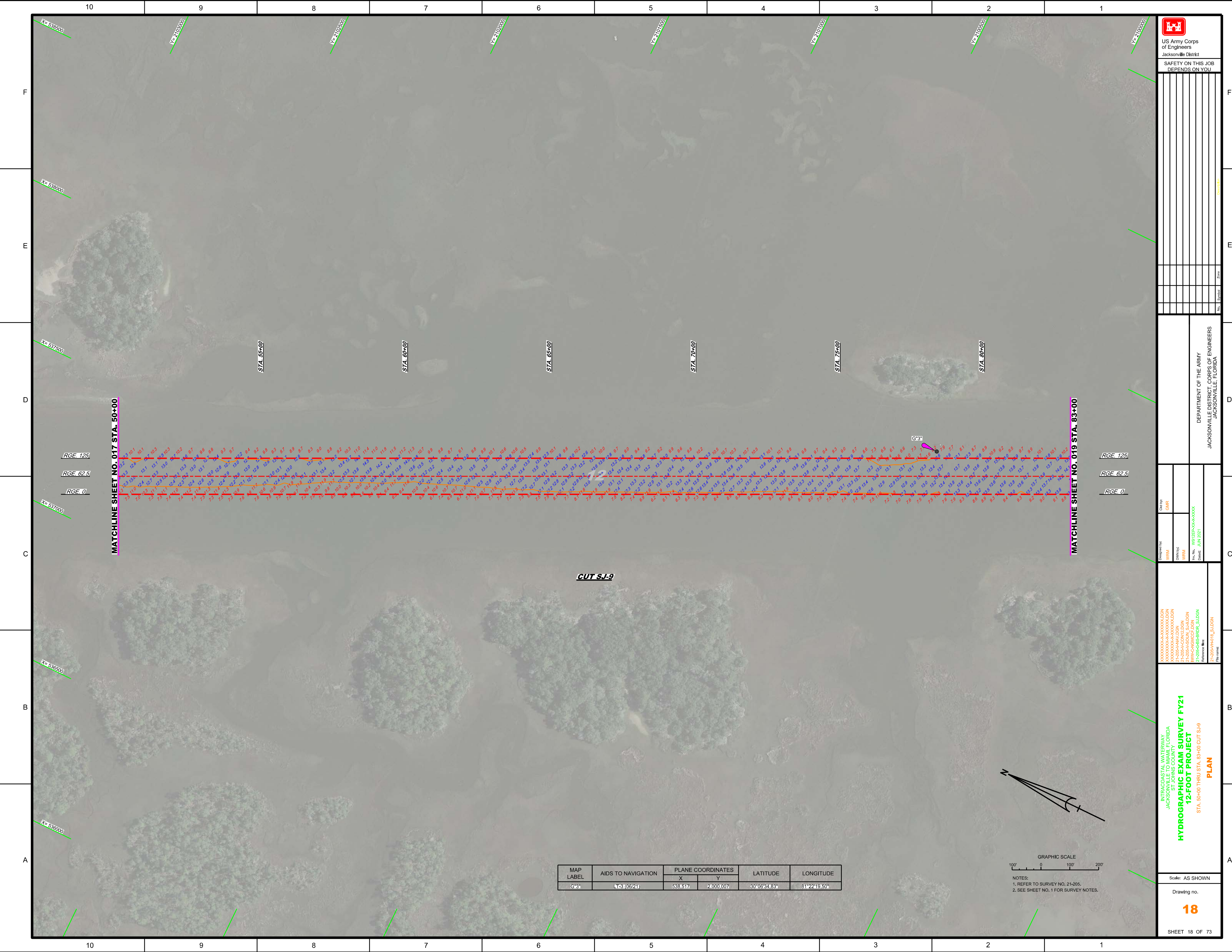
15

SHEET 15 OF 73

MAP LABEL	AIDS TO NAVIGATION	PLANE COORDINATES		LATITUDE	LONGITUDE
		X	Y		
R2*	DBN-2 (06/21)	533,723	2,109,314	30°08'06.80"	81°23'14.44"



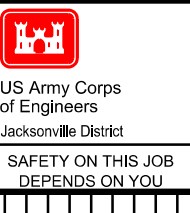
NOTES:
1. REFER TO SURVEY NO. 21-205.
2. SEE SHEET NO. 1 FOR SURVEY NOTES.



MATCHLINE SHEET NO. 017 STA. 50+00

MATCHLINE SHEET NO. 019 STA. 83+00

CUT SJ-9

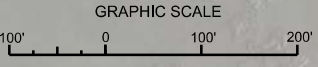


DEPARTMENT OF THE ARMY
JACKSONVILLE DISTRICT, CORPS OF ENGINEERS
JACKSONVILLE, FLORIDA

Checked by: GHR
 Designed by: WRM
 DWN by: WRM
 File No: W1225A-010-0000
 Date: JUN 2021
 Reference File: 21-205A-0101E_SUDGN
 File name: 21-205A-0101E_SUDGN

**INTRACOASTAL WATERWAY
JACKSONVILLE TO MIAMI, FLORIDA
ST. JOHNS COUNTY
HYDROGRAPHIC EXAM SURVEY FY21
12-FOOT PROJECT**
 STA. 50+00 THRU STA. 83+00 CUT SJ-9
PLAN

MAP LABEL	AIDS TO NAVIGATION	PLANE COORDINATES		LATITUDE	LONGITUDE
		X	Y		
G+3	LT-3(03/21)	538.517	2,000.007	30°06'34.83"	81°22'19.50"



NOTES:
 1. REFER TO SURVEY NO. 21-205.
 2. SEE SHEET NO. 1 FOR SURVEY NOTES.



US Army Corps of Engineers
Jacksonville District

SAFETY ON THIS JOB
DEPENDS ON YOU

DEPARTMENT OF THE ARMY
JACKSONVILLE DISTRICT, CORPS OF ENGINEERS
JACKSONVILLE, FLORIDA

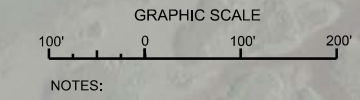
Checked By: GHR
Designed By: WRM
Drawn By: WRM
File No: W31255-00-00-000
Date: JUN 2021

XXXXXXXXXXXXXXXXXXXX
XXXXXXXXXXXXXXXXXXXX
XXXXXXXXXXXXXXXXXXXX
XXXXXXXXXXXXXXXXXXXX
XXXXXXXXXXXXXXXXXXXX
XXXXXXXXXXXXXXXXXXXX
XXXXXXXXXXXXXXXXXXXX
XXXXXXXXXXXXXXXXXXXX
XXXXXXXXXXXXXXXXXXXX
XXXXXXXXXXXXXXXXXXXX

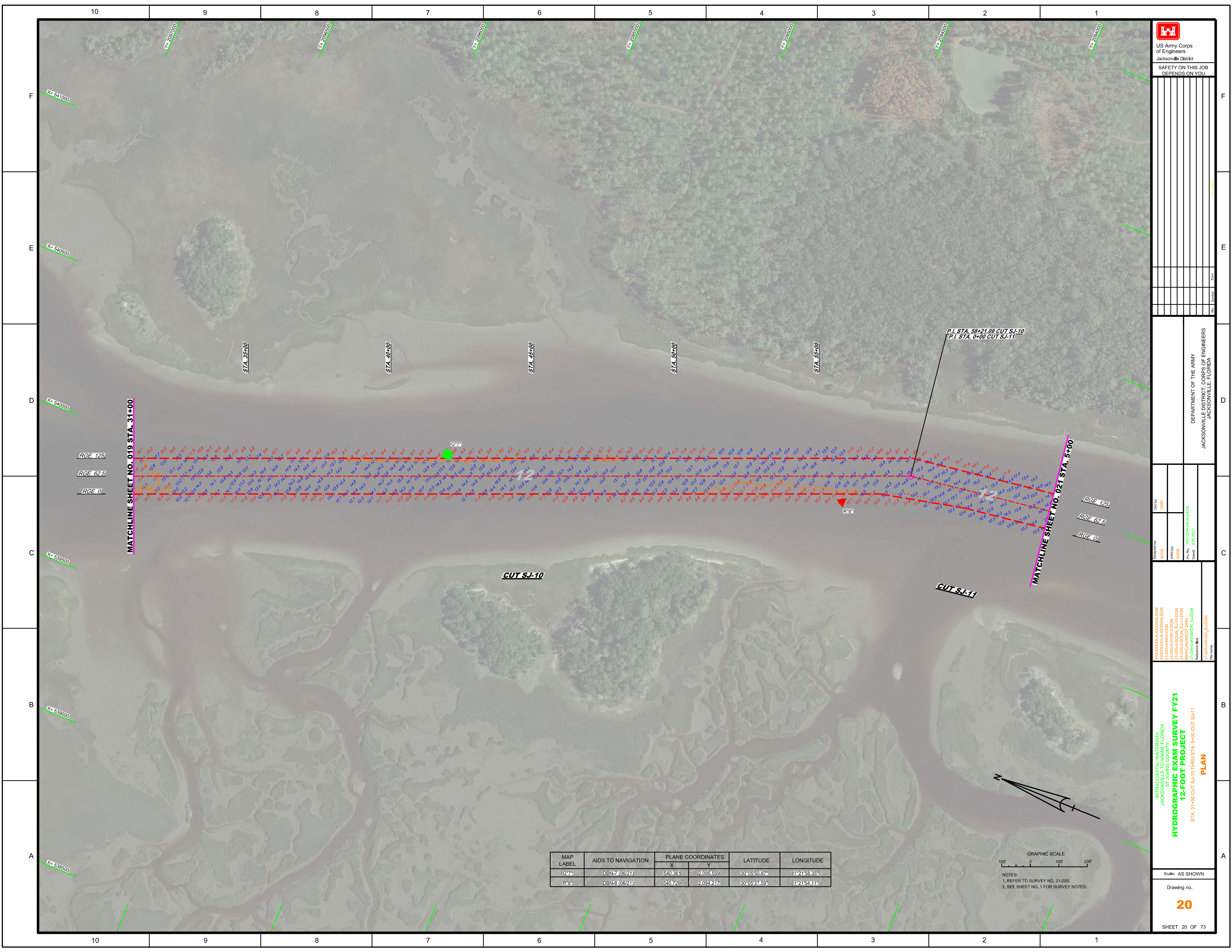
INTRACOASTAL WATERWAY
JACKSONVILLE TO MIAMI, FLORIDA
ST. JOHNS COUNTY
HYDROGRAPHIC EXAM SURVEY FY21
12-FOOT PROJECT
STA. 83+00 CUT SJ-9 THRU STA. 31+00 CUT SJ-10
PLAN

Scale: AS SHOWN
Drawing no.
19
SHEET 19 OF 73

MAP LABEL	AIDS TO NAVIGATION	PLANE COORDINATES		LATITUDE	LONGITUDE
		X	Y		
G-5	DBN-5 (08/21)	539,865	2,098,806	30°08'03.19"	81°22'04.04"




NOTES:
1. REFER TO SURVEY NO. 21-205.
2. SEE SHEET NO. 1 FOR SURVEY NOTES.



MAP LABEL	AIDS TO NAVIGATION	PLANE COORDINATES		LATITUDE	LONGITUDE
		X	Y		
G7*	DBN-7 (08/21)	540,361	2,095,559	30°05'50.87"	81°21'58.35"
R8*	DBN-8 (08/21)	540,729	2,094,247	30°09'37.59"	81°21'54.11"

GRAPHIC SCALE
100' 0 100' 200'

NOTES:
1. REFER TO SURVEY NO. 21-205.
2. SEE SHEET NO. 1 FOR SURVEY NOTES.

 <p>US Army Corps of Engineers Jacksonville District</p>	
<p>SAFETY ON THIS JOB DEPENDS ON YOU</p>	
<p>Designed By: WRM</p> <p>Drawn By: WRM</p> <p>Checked By: WRM</p>	<p>Scale: AS SHOWN</p>
<p>DEPARTMENT OF THE ARMY JACKSONVILLE DISTRICT, CORPS OF ENGINEERS JACKSONVILLE, FLORIDA</p>	
<p>Client: OHR</p> <p>Contract: W13P3EA-16-A-0006</p> <p>Date: JUN 2021</p>	<p>Scale: AS SHOWN</p>
<p>INTRACOASTAL WATERWAY JACKSONVILLE TO MIAMI, FLORIDA ST. JOHNS COUNTY HYDROGRAPHIC EXAM SURVEY FY21 12-FOOT PROJECT STA. 31+00 CUT SJ-10 THRU STA. 5+00 CUT SJ-11 PLAN</p>	
<p>Drawing no. 20</p>	
<p>SHEET 20 OF 73</p>	

NO.	SYMBOL	ZONE

DEPARTMENT OF THE ARMY

 JACKSONVILLE DISTRICT, CORPS OF ENGINEERS

 JACKSONVILLE, FLORIDA

Check By: GHR

 Drawn By: WRM

 File No: W912EJ-60-A-0003

 Date: JUN 2021

XXXXXXXXXXXXXXXXXXXX.DGN

 XXXXXXXXXXXXXXXXXXXX.DGN

 XXXXXXXXXXXXXXXXXXXX.DGN

 XXXXXXXXXXXXXXXXXXXX.DGN

 XXXXXXXXXXXXXXXXXXXX.DGN

 XXXXXXXXXXXXXXXXXXXX.DGN

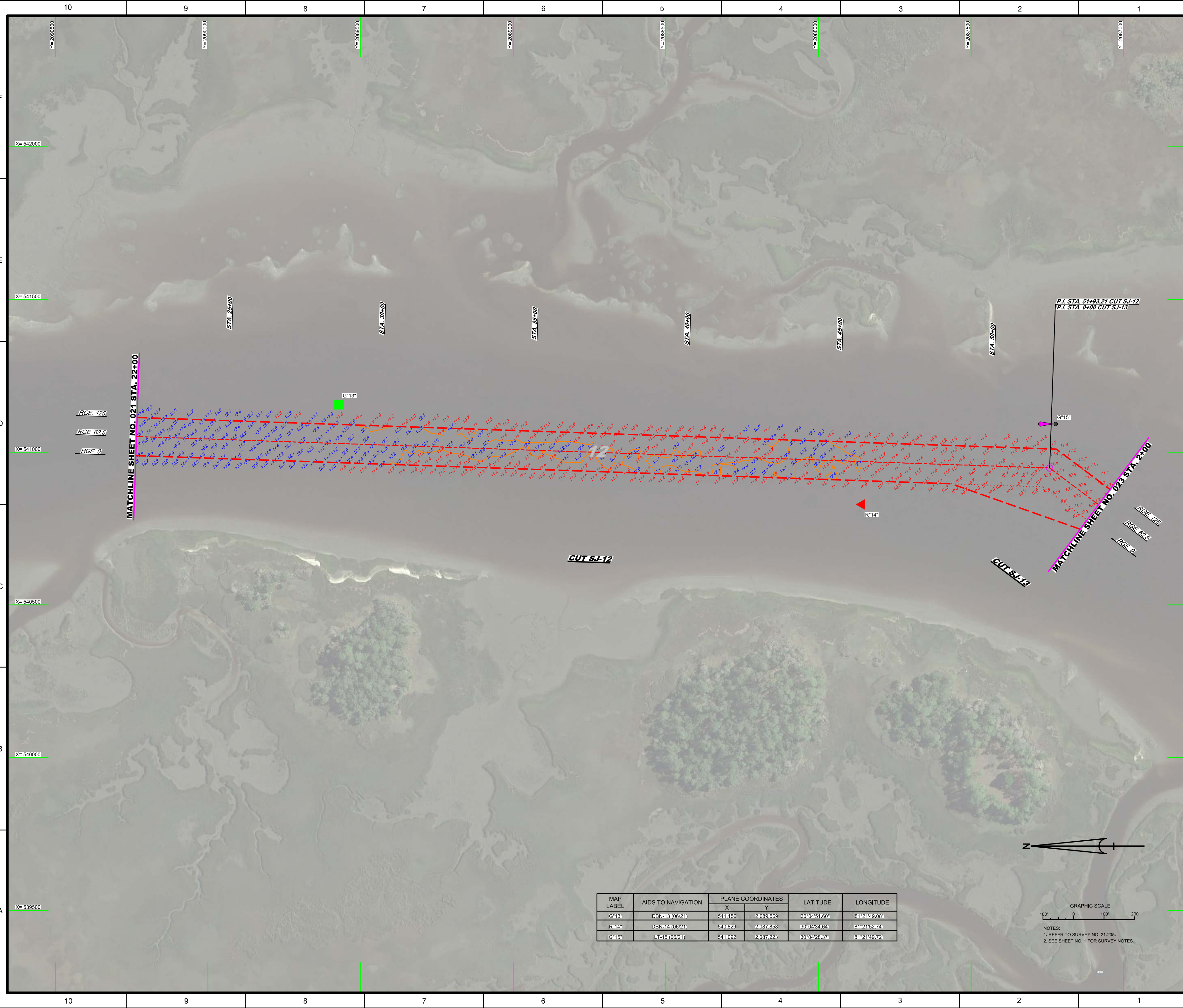
INTRACOASTAL WATERWAY
 JACKSONVILLE TO MIAMI, FLORIDA
 ST. JOHN'S COUNTY
HYDROGRAPHIC EXAM SURVEY FY21
12-FOOT PROJECT
 STA. 22+00 CUT SJ-12 THRU STA. 2+00 CUT SJ-13
PLAN

Scale: AS SHOWN

 Drawing no.

22

 SHEET 22 OF 73

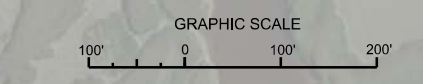


MATCHLINE SHEET NO. 021 STA. 22+00

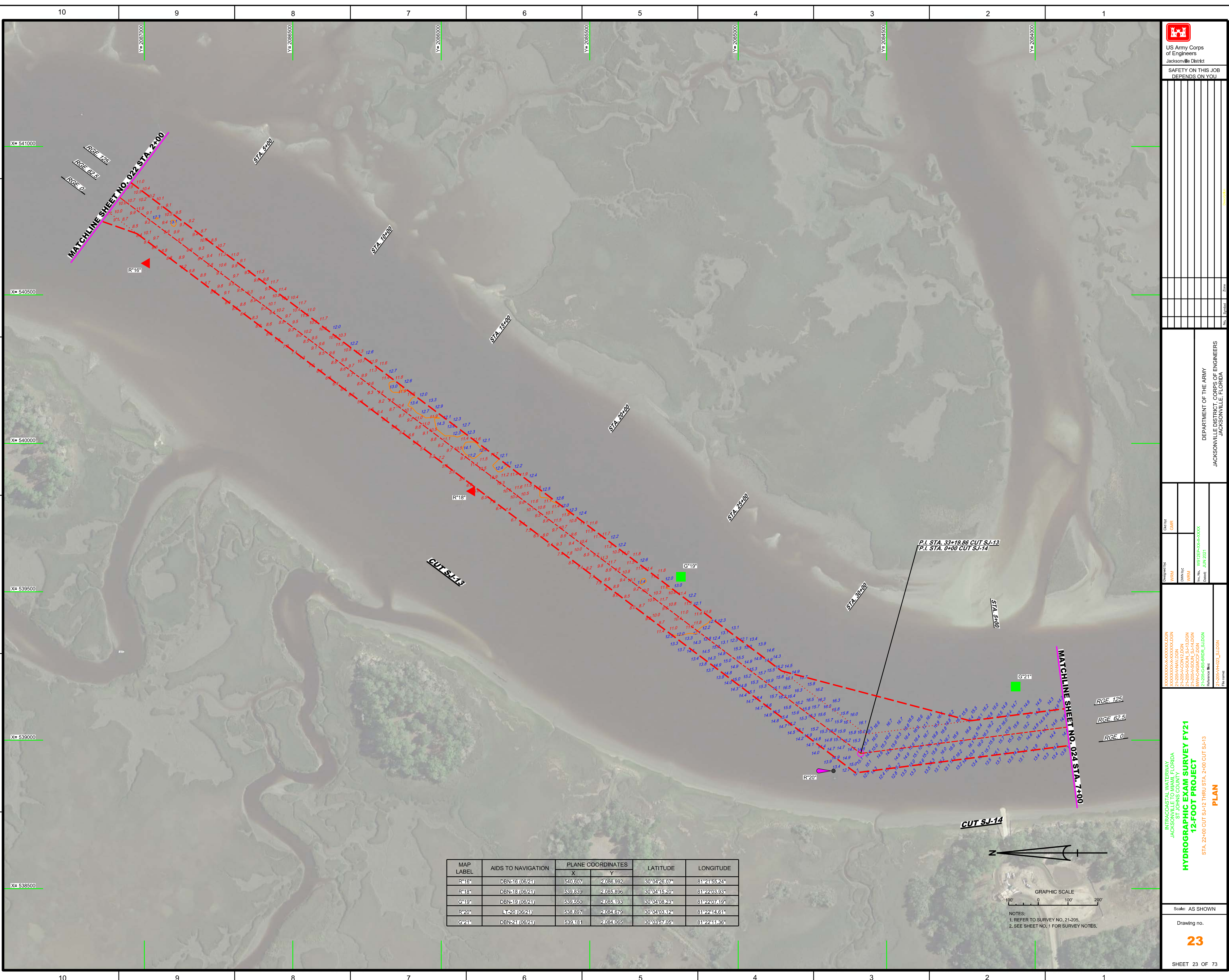
P.I. STA. 51+93.21 CUT SJ-12
P.I. STA. 0+00 CUT SJ-13

MATCHLINE SHEET NO. 023 STA. 2+00

MAP LABEL	AIDS TO NAVIGATION	PLANE COORDINATES		LATITUDE	LONGITUDE
		X	Y		
G*13	DBN13 (08/21)	541.156	2,089,569	30°04'51.60"	81°21'49.08"
R*14	DBN14 (08/21)	540.829	2,087,858	30°04'34.64"	81°21'52.74"
G*15	DBN15 (08/21)	541.092	2,087,228	30°04'28.37"	81°21'49.72"



NOTES:
 1. REFER TO SURVEY NO. 21-205.
 2. SEE SHEET NO. 1 FOR SURVEY NOTES.



US Army Corps of Engineers
Jacksonville District
SAFETY ON THIS JOB DEPENDS ON YOU

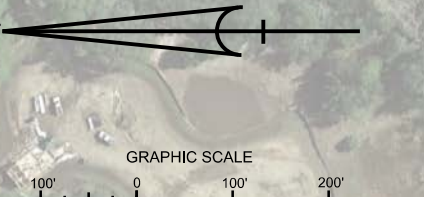
Title			Date			Scale			Author		
No.			Check By	GHR		Reviewed By			Date	JUN 2021	
Zone			Drawn By	WRM		Checked	WRM		File No.	M212258-23-PLAN	
Scale			As Shown			Project No.			Drawing No.	23	
Project			Reference File			Drawing Title					

HYDROGRAPHIC EXAM SURVEY FY21
 12-FOOT PROJECT
 STA. 22+00 CUT SJ-12 THRU STA. 2+00 CUT SJ-13
PLAN

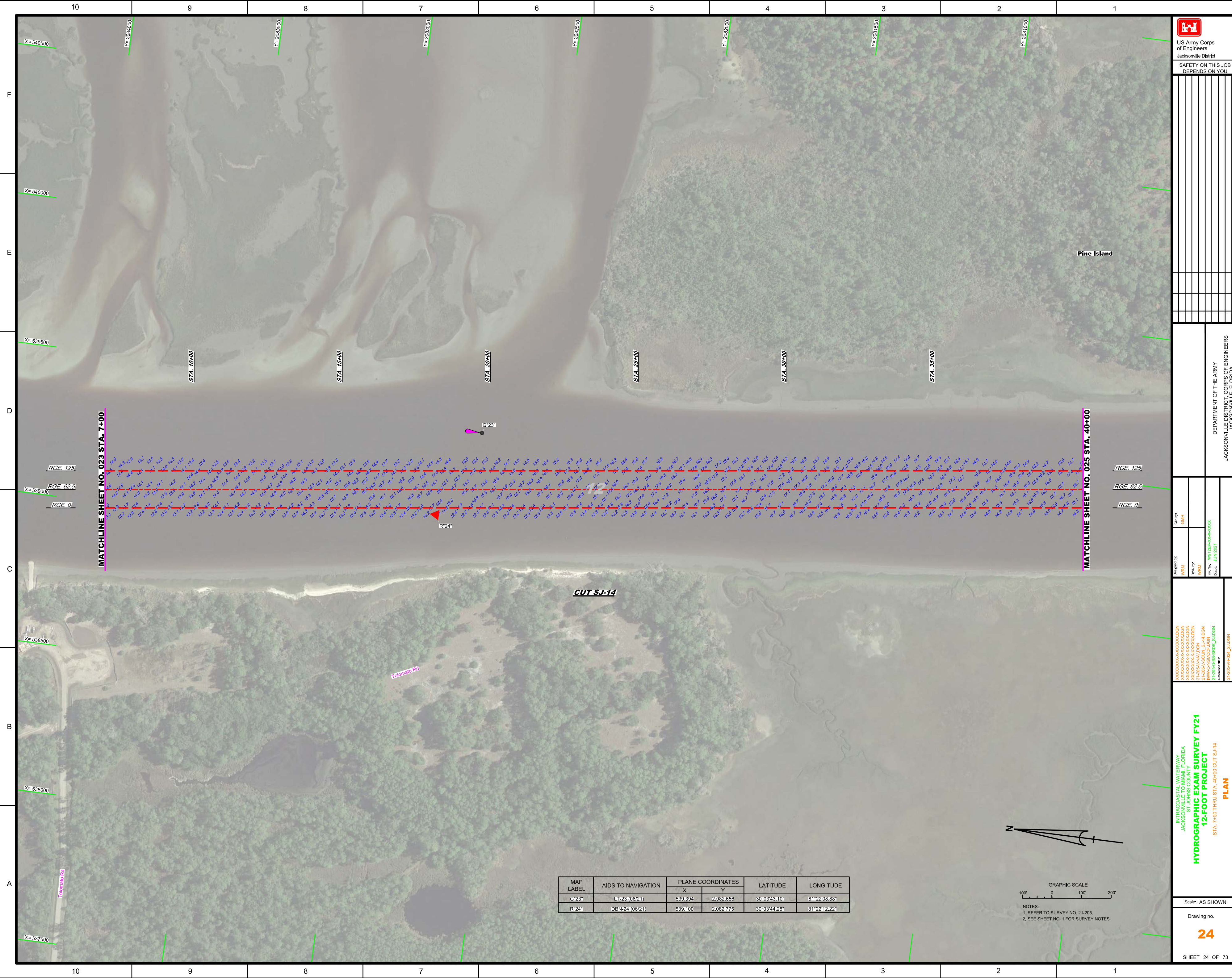
INTRACOASTAL WATERWAY
 JACKSONVILLE TO MIAMI, FLORIDA
 ST. JOHNS COUNTY
 Reference File: 21-205-PHASE2_SUDGN

DEPARTMENT OF THE ARMY
 JACKSONVILLE DISTRICT, CORPS OF ENGINEERS
 JACKSONVILLE, FLORIDA

MAP LABEL	AIDS TO NAVIGATION	PLANE COORDINATES		LATITUDE	LONGITUDE
		X	Y		
R*16°	DBN-18 (08/21)	540,607	2,086,992	30° 04' 28.07"	81° 21' 55.24"
R*18°	DBN-18 (08/21)	539,839	2,085,896	30° 04' 15.20"	81° 22' 03.93"
G*19°	DBN-19 (08/21)	539,650	2,085,193	30° 04' 03.23"	81° 22' 07.19"
R*20°	LT-20 (08/21)	538,897	2,084,679	30° 04' 03.12"	81° 22' 14.61"
G*21°	DBN-21 (08/21)	539,181	2,084,065	30° 03' 57.05"	81° 22' 11.36"



NOTES:
 1. REFER TO SURVEY NO. 21-205.
 2. SEE SHEET NO. 1 FOR SURVEY NOTES.



X= 540500 Y= 2084000

X= 540000 Y= 2083500

X= 539500 Y= 2083000

X= 538500 Y= 2082500

X= 538000 Y= 2082000

X= 537500 Y= 2081500

US Army Corps of Engineers Jacksonville District				
SAFETY ON THIS JOB DEPENDS ON YOU				

MATCHLINE SHEET NO. 023 STA. 7+00

RGE. 125

RGE. 62.5

RGE. 0

STA. 10+00

STA. 15+00

STA. 20+00

STA. 25+00

STA. 30+00

STA. 35+00

MATCHLINE SHEET NO. 025 STA. 40+00

RGE. 125

RGE. 62.5

RGE. 0

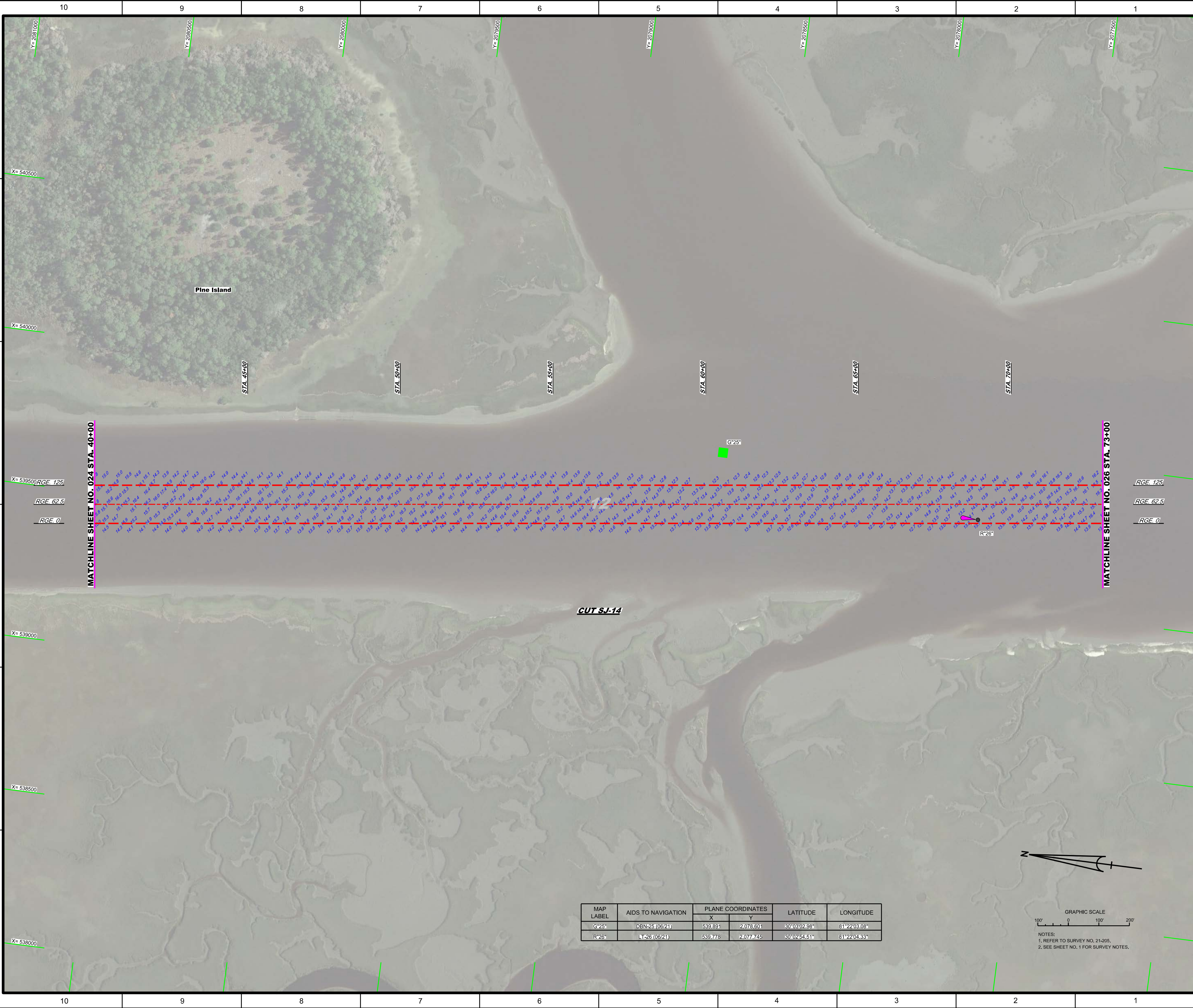


MAP LABEL	AIDS TO NAVIGATION	PLANE COORDINATES		LATITUDE	LONGITUDE
		X	Y		
G*23*	LT-23 (06/21)	539,394	2,082,656	30°03'43.10"	81°22'08.88"
R*24*	DBN-24 (06/21)	539,100	2,082,775	30°03'44.28"	81°22'12.22"



NOTES:
 1. REFER TO SURVEY NO. 21-205,
 2. SEE SHEET NO. 1 FOR SURVEY NOTES.

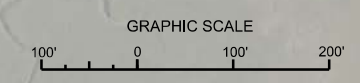
DEPARTMENT OF THE ARMY JACKSONVILLE DISTRICT, CORPS OF ENGINEERS JACKSONVILLE, FLORIDA	
Checked By: GHR Designed By: WRM DWN By: WRM In Use: W912EP-A6-A-000A Date: JUN 2021	File name: 21-205-14324_SUDGN
INTRACOASTAL WATERWAY JACKSONVILLE TO MIAMI FLORIDA ST. JOHNS COUNTY HYDROGRAPHIC EXAM SURVEY FY21 12-FOOT PROJECT STA. 7+00 THRU STA. 40+00 CUT SJ-14 PLAN	
Scale: AS SHOWN	Drawing no. 24
SHEET 24 OF 73	




MATCHLINE SHEET NO. 024 STA. 40+00

MATCHLINE SHEET NO. 026 STA. 73+00

MAP LABEL	AIDS TO NAVIGATION	PLANE COORDINATES		LATITUDE	LONGITUDE
		X	Y		
G-25	DBN-25 (06/21)	539,891	2,078,601	30°03'02.98"	81°22'03.08"
R-26	LT-26 (06/21)	539,776	2,077,745	30°02'45.51"	81°22'04.33"



NOTES:
 1. REFER TO SURVEY NO. 21-205.
 2. SEE SHEET NO. 1 FOR SURVEY NOTES.



US Army Corps of Engineers
 Jacksonville District
 SAFETY ON THIS JOB
 DEPENDS ON YOU

DESIGNED BY: WRM
 DRAWN BY: WRM
 FILE NO.: W91225-NA-000000
 DATE: JUN 2021

DEPARTMENT OF THE ARMY
 JACKSONVILLE DISTRICT, CORPS OF ENGINEERS
 JACKSONVILLE, FLORIDA

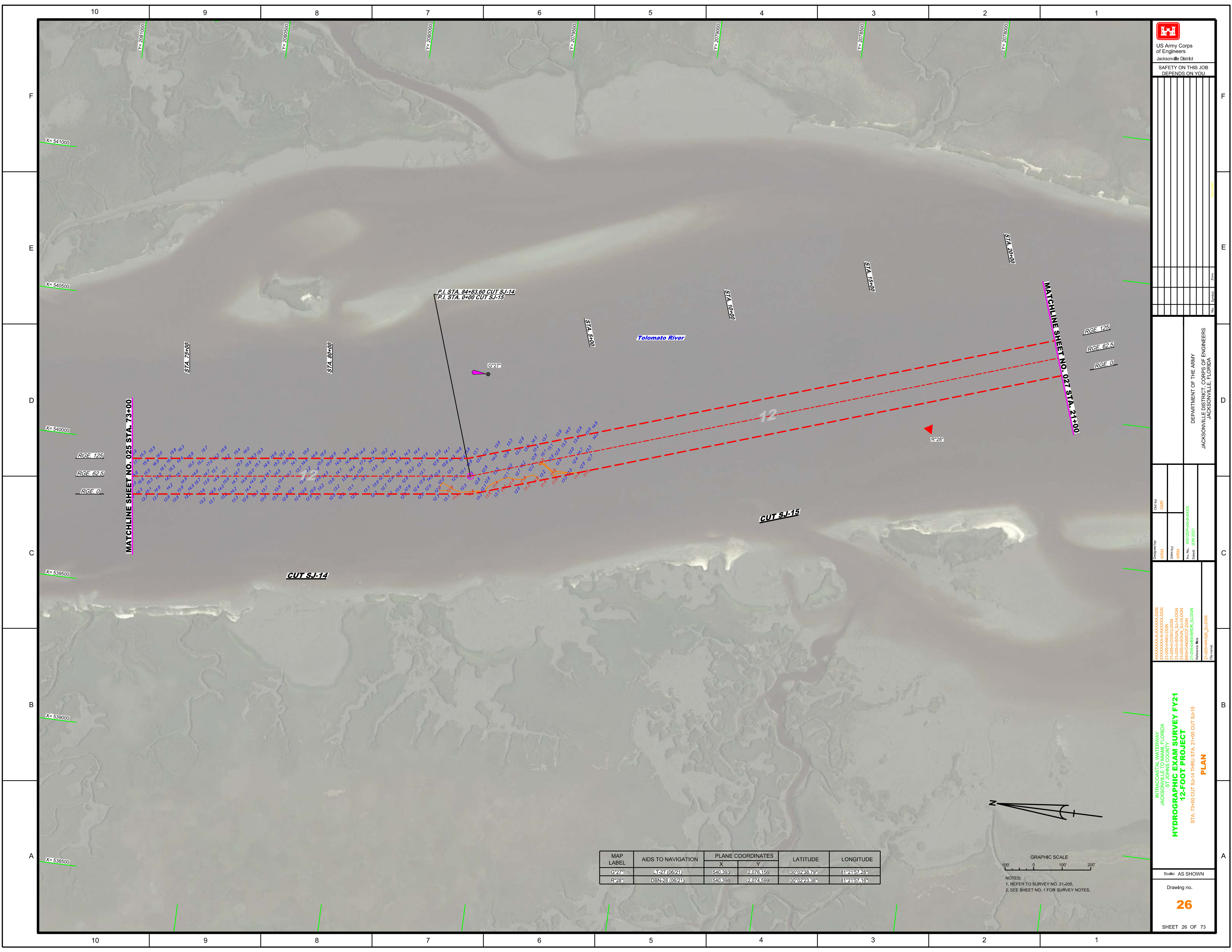
INTRACOASTAL WATERWAY
 JACKSONVILLE TO MIAMI, FLORIDA
 ST. JOHNS COUNTY
HYDROGRAPHIC EXAM SURVEY FY21
12-FOOT PROJECT
 STA. 40+00 THRU STA. 73+00 CUT SJ-14
PLAN

Scale: AS SHOWN

Drawing no.

25

SHEET 25 OF 73



P.I. STA. 84+83.60 CUT SJ-14
 P.I. STA. 0+00 CUT SJ-15

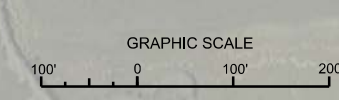
MATCHLINE SHEET NO. 025 STA. 73+00

MATCHLINE SHEET NO. 027 STA. 21+00

RGE 125
 RGE 62.5
 RGE 0

RGE 125
 RGE 62.5
 RGE 0

MAP LABEL	AIDS TO NAVIGATION	PLANE COORDINATES		LATITUDE	LONGITUDE
		X	Y		
G27	LT-27 (08/21)	540,393	2,076,156	30°02'38.79"	81°21'57.28"
R28	DBN-28 (08/21)	540,396	2,074,599	30°02'23.88"	81°21'57.16"



NOTES:
 1. REFER TO SURVEY NO. 21-205.
 2. SEE SHEET NO. 1 FOR SURVEY NOTES.

US Army Corps of Engineers
 Jacksonville District

SAFETY ON THIS JOB
 DEPENDS ON YOU

No.	Date	Symbol	Zone	Remarks

DEPARTMENT OF THE ARMY
 JACKSONVILLE DISTRICT, CORPS OF ENGINEERS
 JACKSONVILLE, FLORIDA

Designed by: WRM	Drawn by: WRM	Check by: GHR
File No.: W912P5-000-00000 Date: JUN 2021		

XXXXXXXXXXXXXXXXXXXX
 XXXXXXXXXXXXXXXXXXXX
 XXXXXXXXXXXXXXXXXXXX
 21-205-A-COIN12.DGN
 21-205-A-SOLA_S-I-I.DGN
 WACANACGE.DGN
 21-205-G-BB-BR06_SUDGN
 21-205-HAZEL_SUDGN

**INTRACOASTAL WATERWAY
 JACKSONVILLE TO MIAMI, FLORIDA
 ST. JOHNS COUNTY
 HYDROGRAPHIC EXAM SURVEY FY21
 12-FOOT PROJECT**

STA. 73+00 CUT SJ-14 THRU STA. 21+00 CUT SJ-15
PLAN

Scale: AS SHOWN
 Drawing no.
26

SHEET 26 OF 73